

FLATLINE VARITANK 450

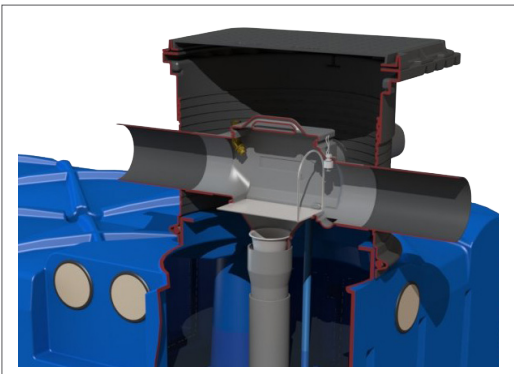
Rainwater tank of coastal fabric with built-in rainwater filter



triDENT
Advanced Filtertechnology

PRODUCT DESCRIPTION

The Flatline Varitank 450 consists of a PE tank and Varitank filter 450. The Flatline rainwater tanks are made of PE, manufactured in one piece. The Flatline tank is suitable for storing rainwater from roofs. The tanks are equipped with 3 prefabricated connections with a rubber collar of DN 110. The bottom of the tank is equipped with a floor (pump housing) of approx. 10 cm. This makes it possible to use the full net volume. At the top of the tank is a manhole with a diameter of 60 cm and a collar that protrudes about 8 cm. The Varitank filter must be mounted on this. The Varitank filter 450 consists of a filter shaft of PE, a pre-assembled Trident tank filter 450 and a filter flate of stainless steel with triangular blades that are at right angles to the water flow. The distance between the slats is approx. 0.5 mm. Because the slats are tilted a few degrees, the rainwater is braked and discharged to the tank. The filter is also equipped with 2 skimmer overflow. When the tank is full, the excess rainwater will drain away. In the event of heavy rainfall, the excess rain water will drain directly through the filter flate and wash away any remaining dirt. The Varitank filter is traffic class A taxable. The tank filter is completely removable by means of click connections so that the rain well remains accessible for inspection and maintenance.

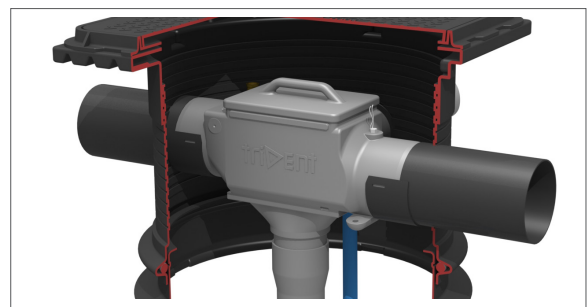


APPLICATION AREA

The tank must be buried at a certain depth, depending on the level of the HWA pipes and ground level. The tank must remain accessible for maintenance. The Flatline tanks can be placed 2/3 in the groundwater provided there is enough counterweight to prevent thawing. The Flatline tank is traffic-able (class B-125 KN) provided there is a minimum ground cover of 60 cm, maximum 150 cm. The Varitank filter 450 is suitable for filtering rainwater from roofs with a maximum roof surface of up to 450 m². The filter shaft is placed on the collar of the tank and sealed with a rubber ring. The shaft can be rotated 360 degrees to simplify installation and to be shortened or raised at any desired Width by means of PE attachments. The decay between the supply and discharge of het regenwater is 39 mm.

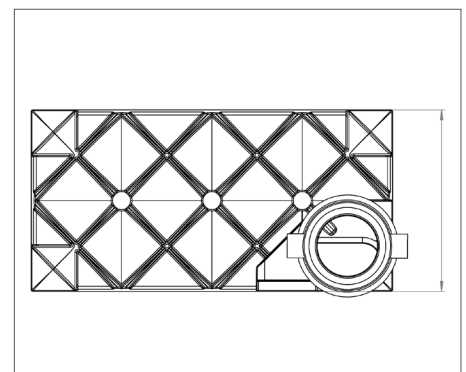
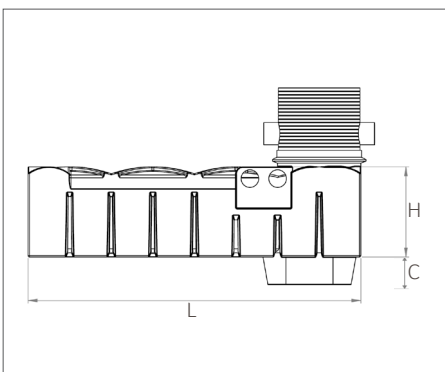
TECHNICAL DATA FLATLINE VARITANK 450

Volume in liter	Length L in cm	Width B in cm	Height C in cm	Height H in cm	Weight in kg
1.500	240	120	10	88	80
3.000	240	240	10	88	170
5.000	296	222	10	121.5	250
7.500	334	231	0	126	310
10.000	592	222	0	121.5	500
15.000	668	231	0	126	620



Detail: pre-assembled Trident 450 tank filter

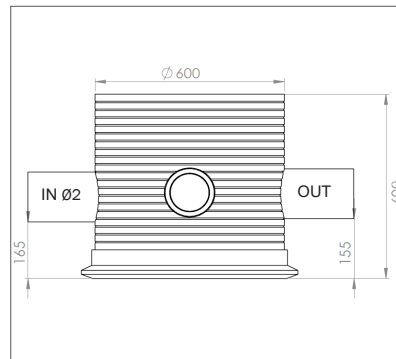
TECHNICAL DRAWINGS



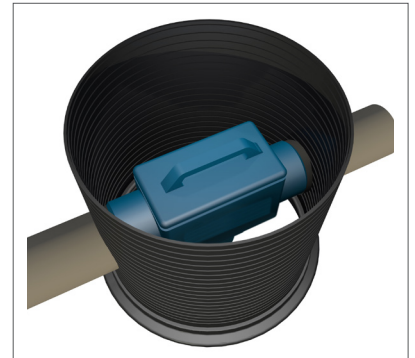
TECHNICAL DATA VARITANK FILTER 450

Height in mm:	600
Height IN mm:	165
Height UIT mm:	155
Weight in kg:	20
Connection in / out in mm:	160
Connection of casing pipe in mm:	110
Manhole Ø in mm:	600
Max. roof area in m2:	450
Height difference on the drain in mm:	39
Housing material:	PE
Material filter plate:	RVS
Connection of nozzle (optional):	1/2"

TECHNICAL DRAWINGS



PRINCIPESHEMA



OPTIONS

Nozzle set for 450 tank filter

The nozzle set ensures that the filter is periodically cleaned. The set consists of a filter sprayer.

Automatic time-controlled filter cleaner 1/2 "

Time-controlled filter cleaner enables automatic filter cleaning. The nozzle will clean the filter surface at freely adjustable times.

Fine filter bag

The fine filter can be placed under the Trident filter flate. This filter bag filters very finely to a mesh size of 150 µm. This fine filter can be used in places where high demands are placed on the water quality.

Backflow alarm for Trident filters

The filter can be equipped with an alarm sensor that signals backflow from the overflow. This alarm sensor can be connected to an IRM rainwater system that switches to drinking water as soon as an alarm signal comes from the sensor. This will contaminate pump, sanitary pipes and appliances.

Varitank inner shaft 60 cm

The shaft with the sealing ring supplied can be mounted on the filter shaft. The shaft can easily be shortened. Each type of Varitank lid can thus be equated to the ground level on any desired Höhe.

Clutch kit

Complete set for the coupling of two rain washer tanks to each other. Set consists of two tank penetrations and compression fittings for a 50 mm connection tube. This tube is not included.

Flatline suction set

Suction set for a high net volume in the tank. Equipped with suction basket with foot valve, coupling to 1 "wire and a float switch with low switching loss.

Varitank lid set

For every Varitank filter a wide range of lids is available in traffic classes A, B and D. Check the special Varitank lid page to choose which lid is most suitable for your situation.

SCOPE OF DELIVERY

Product consists of: Flatline Varitank, filter housing, filter cover and Trident filter flate with removal bracket, quiet supply, telescopic tube, rubber ring with lubricant and shaft. Tanks are delivered in the color black.

ORDERING INFORMATION

Art nr	NAME	PG	Art nr	Options	PG
403107	Flatline Varitank 450 - 1.500 liter	3	401151	Nozzle set for 450 tank filter	2
403108	Flatline Varitank 450 - 3.000 liter	3	401155	Automatic time-controlled filter cleaner 1/2 "	2
403109	Flatline Varitank 450 - 5.000 liter	3	401157	Fine filter bag	2
403110	Flatline Varitank 450 - 7.500 liter	3	401158	Backflow alarm for Trident filters	2
403111	Flatline Varitank 450 - 10.000 liter	3	403512	Varitank inner shaft 60 cm	2
403112	Flatline Varitank 450 - 15.000 liter	3	403515	Clutch set 50 mm	2
Ruim assortiment aan deksels leverbaar, zie de Varitank deksels van GEP.			403659	Flatline suction set	2