

# IRM®- 8 SP WATERMANAGER

Industrial rainwater system with double self-priming centrifugal pump



rethinking water



## PRODUCT DESCRIPTION

The IRM®-8 SP Water Manager is a plug-in, compact installation for rainwater use in residential complexes, commercial and public buildings. The break tank for drinking water supply conforms to EN1717 type AA, capacity 100 liters. The IRM®-8 SP Water Manager has a double self-priming centrifugal pump (RC-3 or RC-5). In the absence of rainwater, the break tank is filled with drinking water by means of a 1" solenoid valve. In that case the pumps suck drinking water from this tank.

The IRM®-8 SP Watermanager is provided with a steel casing and should be installed in a frost-free, dry room with drainage on the ground, for example a scrubbing well. Pressure and status display of the system is clear, in four languages, shown on the LCD display. Control is equipped with a turn-hour control, with data log and a control of the automatic filter cleaner (option).

## SCOPE

The system is applicable for the use of filtered rainwater for toilet flushes and other applications for which no drinking water quality is required, within utility buildings and commercial buildings. The distance between IRM®-8 SP Watermanager and the rainwater tank must not exceed 15 meters.

## TECHNICAL DATA

|                            |           |
|----------------------------|-----------|
| Width in mm:               | 570       |
| Depth in mm:               | 600       |
| Height in mm:              | 1.313     |
| Weight (empty) in kg.:     | 90        |
| Weight (full) in kg.:      | 190       |
| Pressure line:             | 1 1/2" bu |
| Drinking water connection: | 1" bu     |
| supply pump:               | 5/4" bu   |
| Emergency overflow in mm:  | 110       |

## TECHNICAL SPECIFICATIONS

|                            |       |
|----------------------------|-------|
| Voltage in V:              | 230   |
| Power in Watt:             | 2.200 |
| Max. flow in liters / min: | 120   |
| Max. increaseHeight in m:  | 50    |
| Number of fans:            | 5     |
| Capacitor in µF:           | 20    |

## 8-30

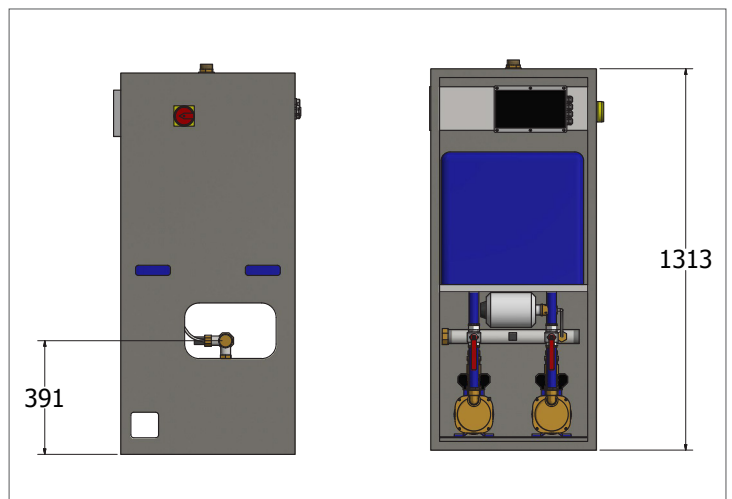
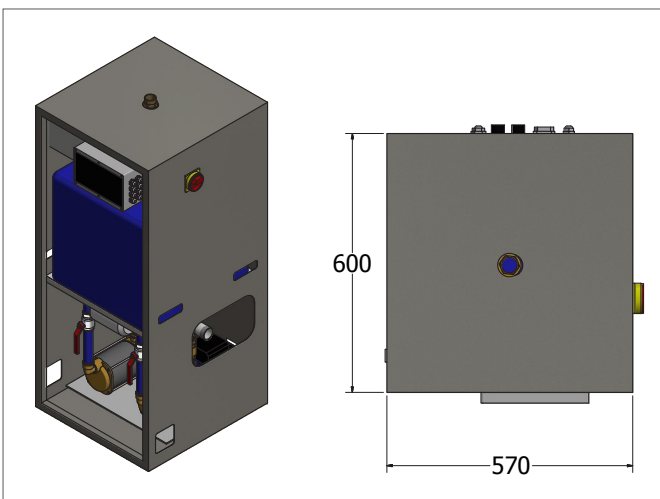
|                            |       |
|----------------------------|-------|
| Voltage in V:              | 230   |
| Power in Watt:             | 2.700 |
| Max. flow in liters / min: | 180   |
| Max. increaseHeight in m:  | 53    |
| Number of fans:            | 5     |
| Capacitor in µF:           | 25    |

## 8-50

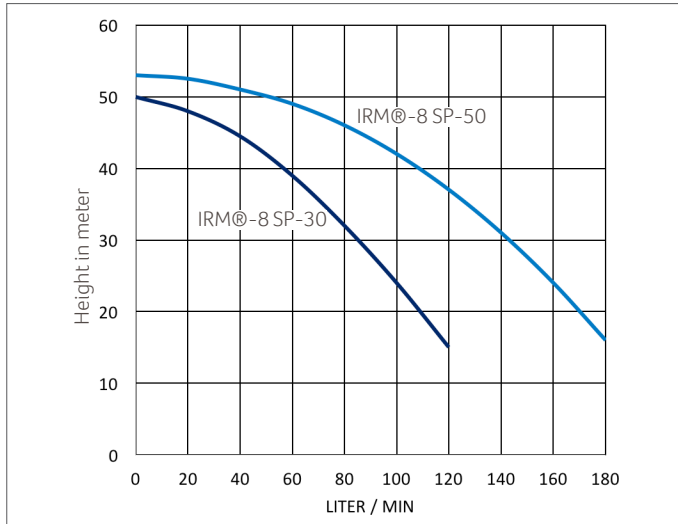
## MATERIAL

|                                |                                       |
|--------------------------------|---------------------------------------|
| Housing:                       | Gemoffeld staal                       |
| Breaktank:                     | HPDE                                  |
| Drinking water connection:     | Messing                               |
| Supply pump connection:        | Messing                               |
| Connection Pressure side:      | RVS                                   |
| Fans:                          | RVS                                   |
| Pump housing:                  | RVS                                   |
| Motor housing:                 | RVS                                   |
| Air separator and guide wheel: | PPO (noryl)                           |
| Electro cable pump:            | 3 aderig 1,00 mm <sup>2</sup> H07Rn-F |

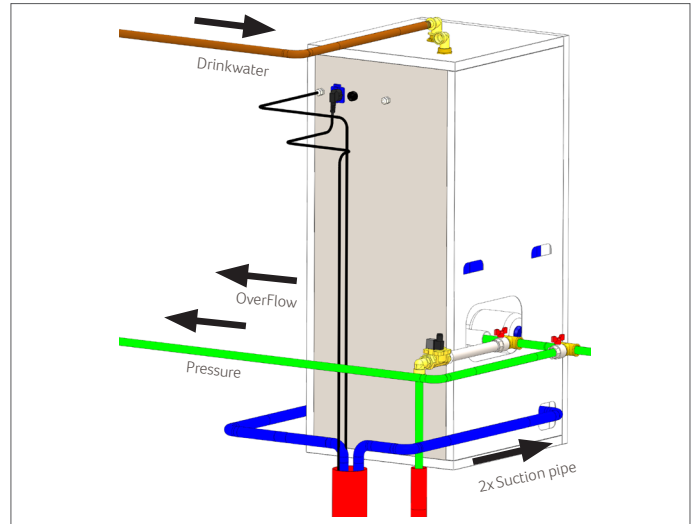
## TECHNICAL DIAGRAMS



## PUMP CHARACTERISTIC



## CONNECTION DIAGRAM



## OPTIONS

Level sensor with 20 meters of cable  
With this sensor it is possible to display the current water level in the rainwater tank on the control unit.

Automatic time-controlled filter cleaner 1 "  
Time-controlled filter cleaner enables automatic filter cleaning. The nozzle will clean the filter surface at freely adjustable times.

Water lock 1 " including detection point  
Always close the drinking water supply during an overflow alarm to prevent water loss. This makes it possible to mount the device without connecting the overflow.

Backflow sensor  
This registers an alarm signal from the sewer level, after which the IRM@ system switches to drinking water and activates an alarm signal.

Supply pump  
Supply pump provides the supply of rainwater to the Water Manager. Type depends on desired flow rate and on the distance (> 15m) and the Height (> 3m) between the Watermanager and rainwater well.

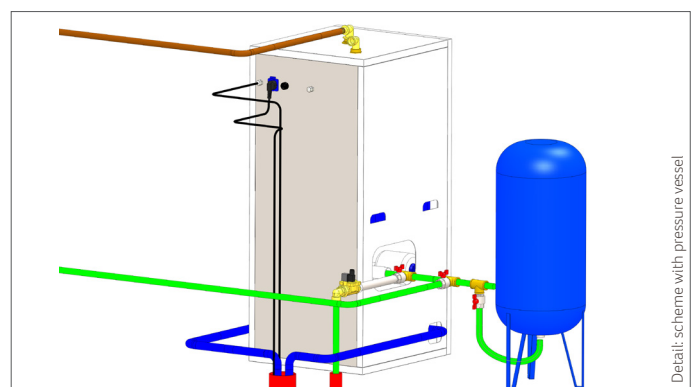
Pressure vessel  
Pressure vessels give the switching behavior of the pumps a calmer character, which benefits the life and energy consumption of the pumps. IRM@-8 SP Watermanager and the rainwater tank must not exceed 15 meters.

## SCOPE OF DELIVERY

Product consists of: IRM@-8SP-30 or IRM@-8SP-50 Watermanager and installation instructions.

## ORDERING INFORMATION

| Art nr   | NAME   | PG |
|--|--|----|
| 402604   | IRM@-8 SP Watermanager 8-30                  | 4  |
| 402605   | IRM@-8 SP Watermanager 8-50                  | 4  |
| 402711   | Level sensor with 20 meters of cable         | 4  |
| 401251   | Automatic time-controlled filter cleaner 1 " | 4  |
| 402125   | Water lock 1 " including detection point     | 4  |
| 401158   | Backflow sensor                              | 4  |
| For supply pumps see the GEP specification sheet     |  |    |
| For pressure vessels see the GEP specification sheet |  |    |



Detail: scheme with pressure vessel